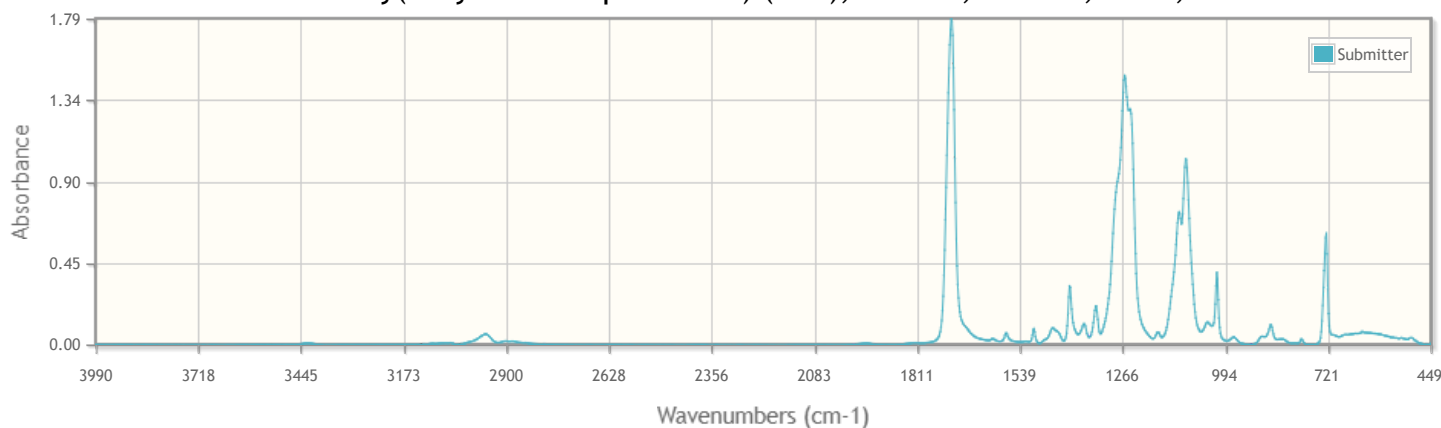


ISR00145 Poly(ethylene terephthalate) (PET); Aldrich; 200255; FDLE; tran



Section: 12

Synthetic resins (SR)

Page: 145

Copyright © 1993-2023 Infrared and Raman Users Group (IRUG)

Details

IRUG filename: ISR00145	Data type: Infrared	IRUG material class: Synthetic resins (SR)
Sample type: Reference material	Common name(s): Poly(ethylene terephthalate) (PET)	Chemical/botanical name(s): 1,4-Benzenedicarboxylic acid, dimethyl ester, polymer with 1,2-ethanediol
CAS name: Poly(oxy-1,2-ethanediyloxycarbonyl-1,4-phenylenecarbonyl)	Sample source 1: Aldrich Chemical Company	Source location 1: Milwaukee, WI, US
Sample identifier 1: Aldrich #200255	Sample source 2: Florida Department of Law Enforcement, Materials Analysis Unit, Trace Evidence Section	Source location 2: Orlando Regional Operations Center, 500 West Robinson Street, Orlando, FL, 32801, US
Color: Colorless	Age: 2001, purchased	Application: MFTIR (Fourier transform infrared microspectroscopy)
Mode: Tran	Originating institution name: Florida Department of Law Enforcement, Materials Analysis Unit, Trace Evidence Section	Originating institution acronym: FDLE
Molecular formula: (C ₁₀ H ₈ O ₄) _n	CAS registry no: 25038-59-9	